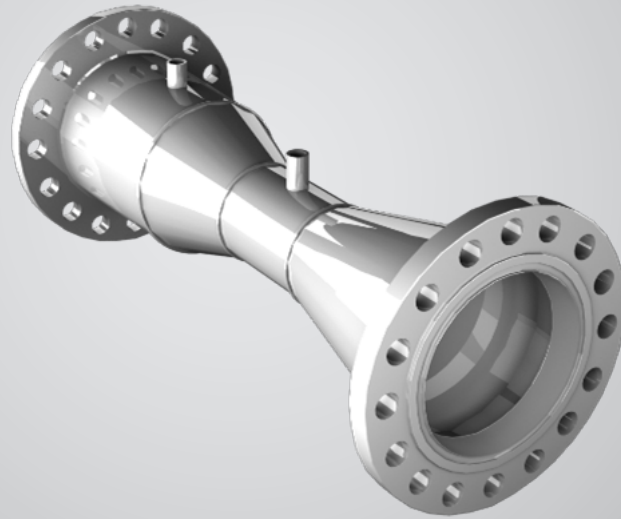




FLOW



Technology Solutions



# Venturi Tube Tek-DP 1640A

## 1 FEATURES

- Accuracy  $\leq \pm 0.5\%$  of the actual flow rate .
- Durable and optimized design, simple configuration.
- Suitable for high-pressure, high-velocity, non-viscous, erosive process media.
- Designs in accordance with ASME and ISO Standards.
- Durable and optimized design, simple configuration.
- Leakage-proof, spillage-proof assembly.
- Virtually maintenance- free and corrosion-resistant.
- Shortest laying pipe-length.
- Reduced piping cost.
- Highest pressure recovery or lowest permanent pressure loss.
- Repeatability 0.1 %.
- Available in all pipe sizes and a wide range of materials.

## 3 APPLICATIONS

- Water and sewage plants.
- Slurry flows in mining, chemical plants.
- Power Generation.
- Hydrocarbon, Liquid & Gas Process. LNG Trains.
- High Accuracy Custody Transfer, Fiscal and Allocation Flow Metering. Compressor Stations.
- Cryogenics.

## 2 SPECIFICATION

### For Normal Liquids

<b>Material</b>	All standard materials available
<b>Tap Connections</b>	Two 1/2" NPT per side standard, Flanged, Socket Welded, Butt Welded, Valves
<b>Venturi Tube Sizes</b>	1" to 48", Custom size available on order, Flanged, Socket Welded, Butt Welded Valves
<b>Turn Down Ratio</b>	10:1 Standard
<b>Beta Ratio</b>	Typically, $\beta$ 0.4 to 0.75
<b>End Connection</b>	#150 - #2500 RF/RTJ, SO/WN Flanges or Beveled ends
<b>Operating Temperature</b>	Standard at -20° to 100° F, optional -40° to 1200° F
<b>Operating Position</b>	Vertical, Horizontal (any orientations for liquids only)
<b>Process products</b>	Liquids, Liquid Hydrocarbons, Cryogenics
<b>Assembly Type</b>	Flange, Weld in, Insertion type

### For Wet Gases

<b>Material</b>	All standard materials available (See model chart)
<b>Tap Connections</b>	Three 1/2" NPT standard, Flanged end, Socket welded, Butt welded, Valves
<b>Venturi Tube Sizes</b>	1" to 48", Custom size available on order , Flange, Weld in, Insertion type
<b>Turn Down Ratio</b>	10:1 Standard
<b>Beta Ratio</b>	Typically, $\beta$ 0.4 to 0.75
<b>End Connection</b>	#150 - #2500 RF/RTJ, SO/WN Flanges or Beveled ends
<b>Operating Temperature</b>	Standard at -20° to 100° F, optional -40° to 1200° F
<b>Operating Position</b>	Vertical, Horizontal, Hydrocarbon Wet Gases, Steam, (other orientations available)
<b>Process products</b>	Natural Gases, Steam.
<b>Assembly Type</b>	Flange, Weld in, Insertion type